

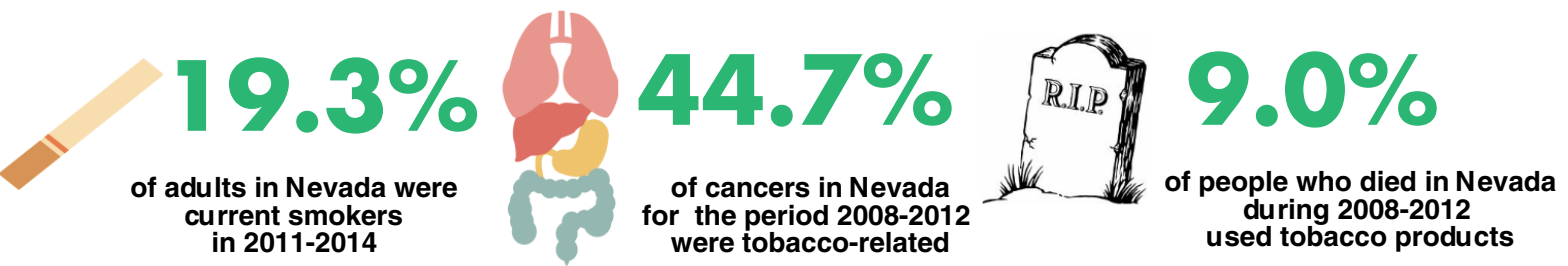


Tobacco Smoking in Nevada

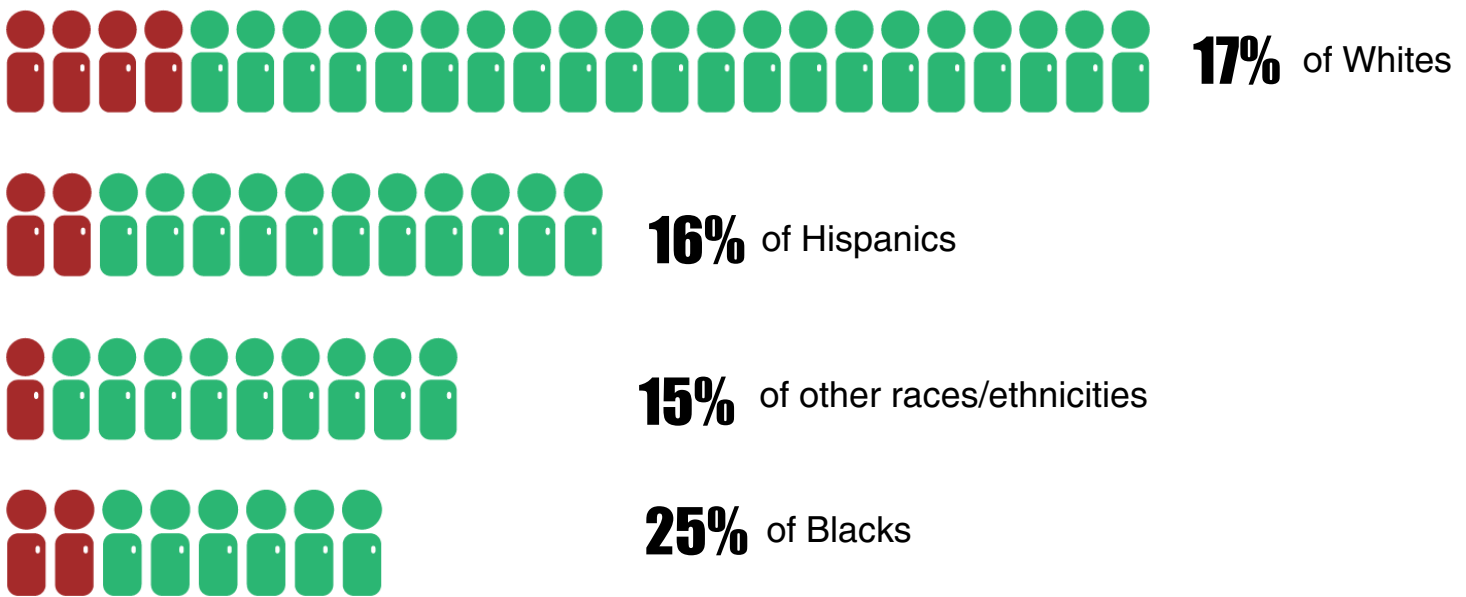


According to the Centers for Disease Control and Prevention, cigarette smoking and exposure to tobacco smoke affects nearly all body organs. Smoking is a major cause of tobacco-related illnesses such as heart disease, some cancers, and respiratory diseases. Tobacco use and exposure to tobacco smoke are associated with premature death from chronic diseases. Tobacco use is also responsible for economic losses and places a burden on both society and the health care system.

Did you know?



Percent of Nevadans who were current smokers by race/ethnicity*



*Behavioral Risk Factor Surveillance System, 2014 data

What you can do

Call Nevada Tobacco Quit line at 1-800-QUIT-NOW (1-800-784-8669)

Go online to www.nevadatobaccoquitline.com



Go online to <http://nevadawellness.org/>

For additional information regarding this infographic please contact the Office of Public Health Informatics and Epidemiology at (775)-684-5911. This publication was supported by the Nevada State Division of Public and Behavioral Health through Grant Number 1U58DP006009-01 from the Centers for Disease Control and Prevention.

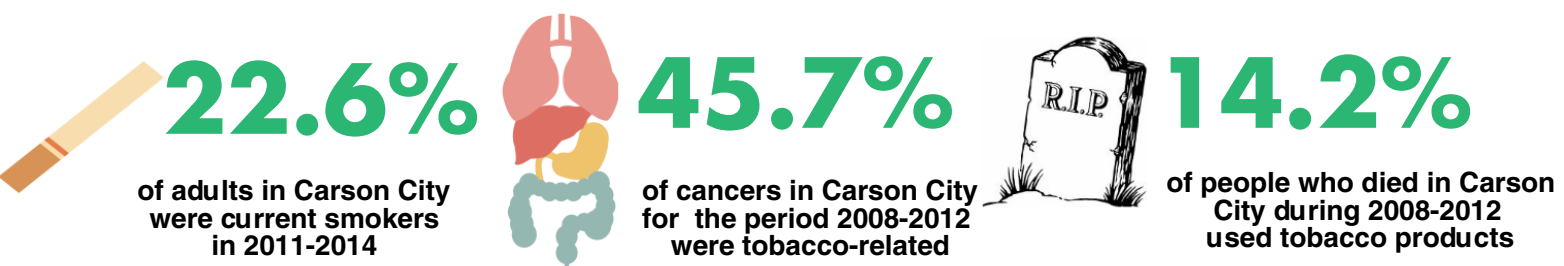


Tobacco Smoking in Carson City County, Nevada

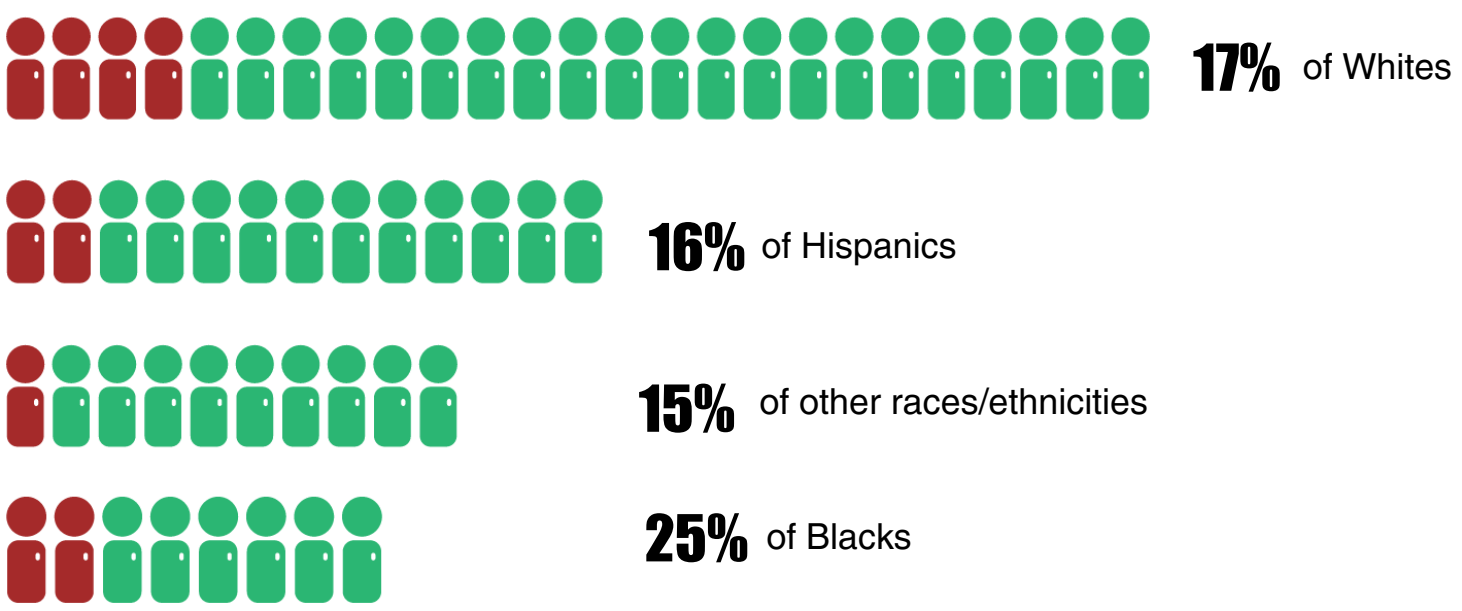


According to the Centers for Disease Control and Prevention, cigarette smoking and exposure to tobacco smoke affects nearly all body organs. Smoking is a major cause of tobacco-related illnesses such as heart disease, some cancers, and respiratory diseases. Tobacco use and exposure to tobacco smoke are associated with premature death from chronic diseases. Tobacco use is also responsible for economic losses and places a burden on both society and the health care system.

Did you know?



Percent of Nevadans who were current smokers by race/ethnicity*



*Behavioral Risk Factor Surveillance System, 2014 data

What you can do

Call Nevada Tobacco Quit line at 1-800-QUIT-NOW (1-800-784-8669)

Go online to www.nevadatobaccoquitline.com



Go online to <http://nevadawellness.org/>

For additional information regarding this infographic please contact the Office of Public Health Informatics and Epidemiology at (775)-684-5911. This publication was supported by the Nevada State Division of Public and Behavioral Health through Grant Number 1U58DP006009-01 from the Centers for Disease Control and Prevention.

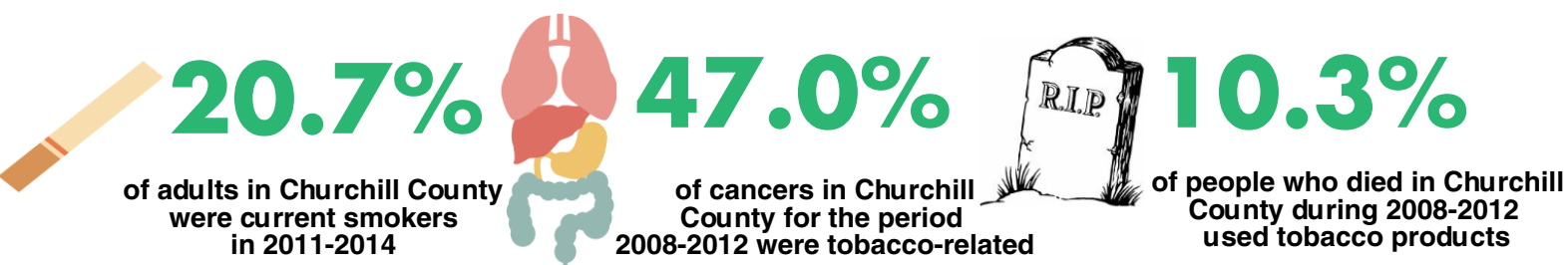


Tobacco Smoking in Churchill County, Nevada

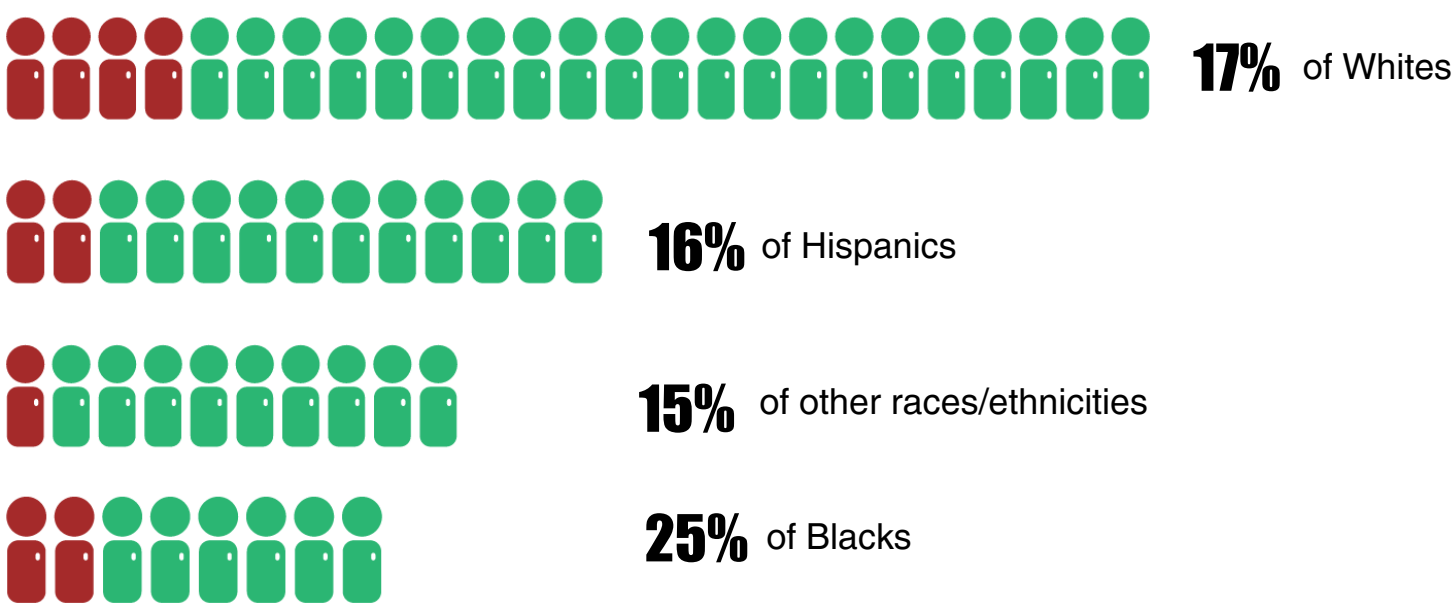


According to the Centers for Disease Control and Prevention, cigarette smoking and exposure to tobacco smoke affects nearly all body organs. Smoking is a major cause of tobacco-related illnesses such as heart disease, some cancers, and respiratory diseases. Tobacco use and exposure to tobacco smoke are associated with premature death from chronic diseases. Tobacco use is also responsible for economic losses and places a burden on both society and the health care system.

Did you know?



Percent of Nevadans who were current smokers by race/ethnicity*



*Behavioral Risk Factor Surveillance System, 2014 data

What you can do

Call Nevada Tobacco Quit line at 1-800-QUIT-NOW (1-800-784-8669)

Go online to www.nevadatobaccoquitline.com



Go online to <http://nevadawellness.org/>

For additional information regarding this infographic please contact the Office of Public Health Informatics and Epidemiology at (775)-684-5911. This publication was supported by the Nevada State Division of Public and Behavioral Health through Grant Number 1U58DP006009-01 from the Centers for Disease Control and Prevention.

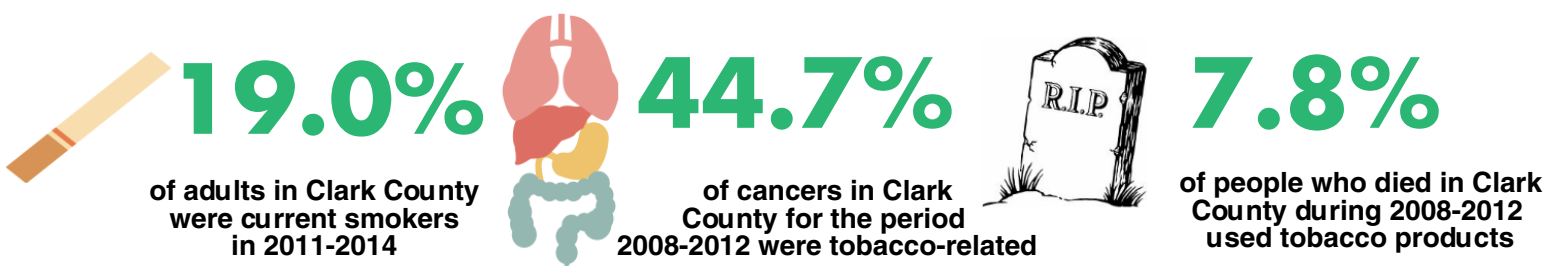


Tobacco Smoking in Clark County, Nevada

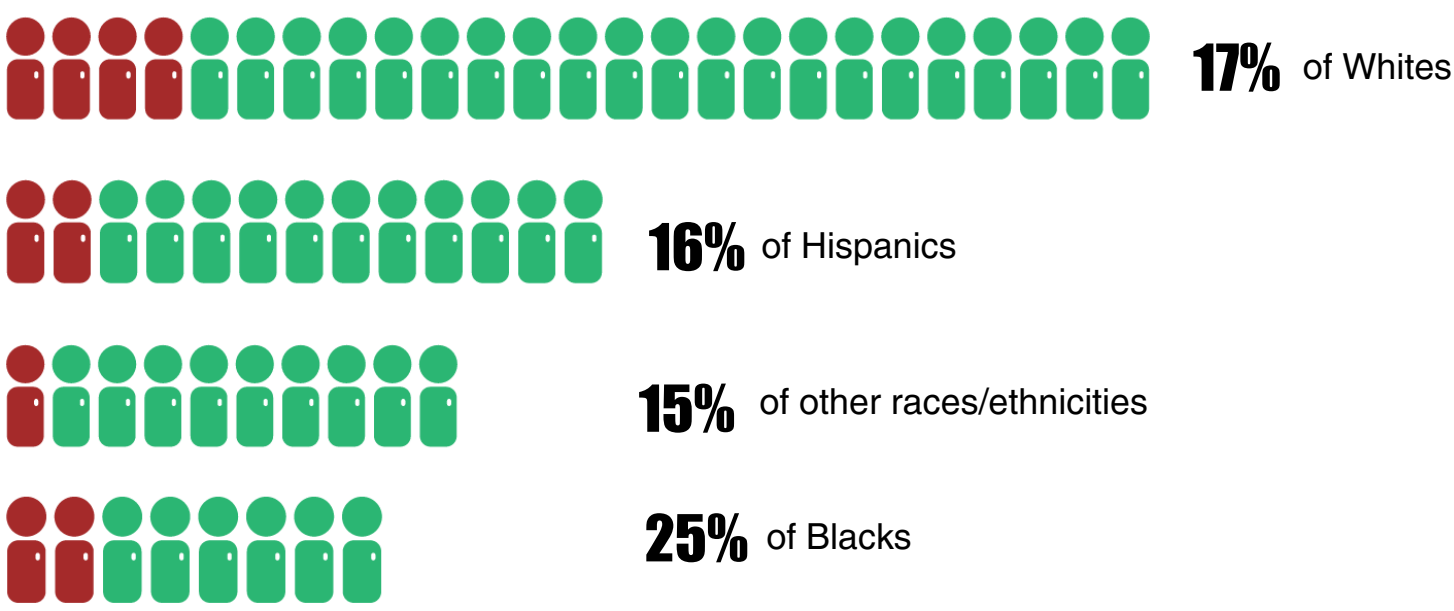


According to the Centers for Disease Control and Prevention, cigarette smoking and exposure to tobacco smoke affects nearly all body organs. Smoking is a major cause of tobacco-related illnesses such as heart disease, some cancers, and respiratory diseases. Tobacco use and exposure to tobacco smoke are associated with premature death from chronic diseases. Tobacco use is also responsible for economic losses and places a burden on both society and the health care system.

Did you know?



Percent of Nevadans who were current smokers by race/ethnicity*



*Behavioral Risk Factor Surveillance System, 2014 data

What you can do

- Call Nevada Tobacco Quit line at 1-800-QUIT-NOW (1-800-784-8669)
- Go online to www.nevadatobaccoquitline.com
- Go online to <http://nevadawellness.org/>



For additional information regarding this infographic please contact the Office of Public Health Informatics and Epidemiology at (775)-684-5911. This publication was supported by the Nevada State Division of Public and Behavioral Health through Grant Number 1U58DP006009-01 from the Centers for Disease Control and Prevention.

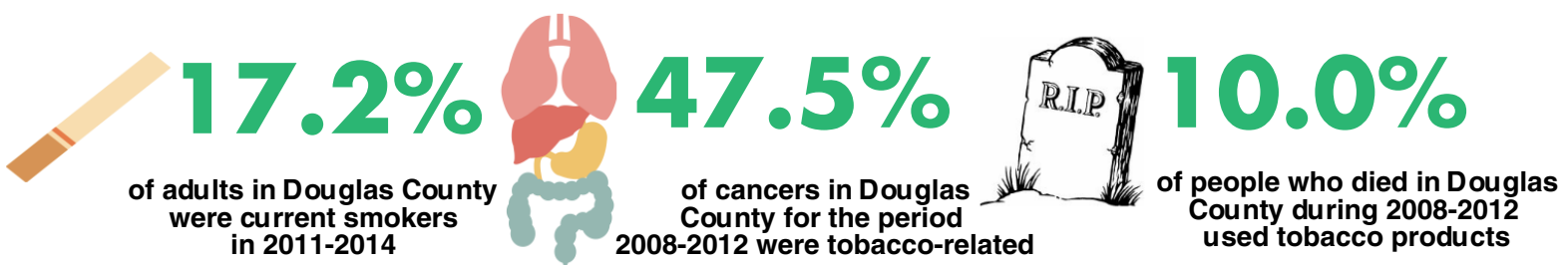


Tobacco Smoking in Douglas County, Nevada

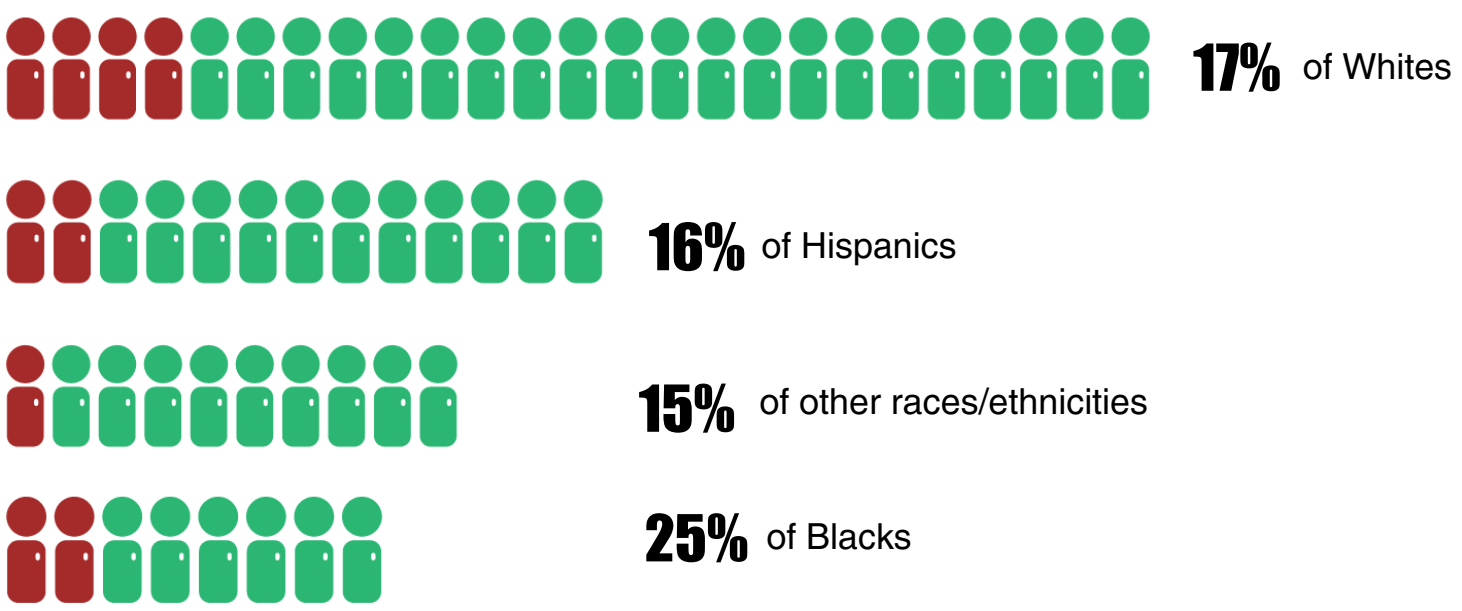


According to the Centers for Disease Control and Prevention, cigarette smoking and exposure to tobacco smoke affects nearly all body organs. Smoking is a major cause of tobacco-related illnesses such as heart disease, some cancers, and respiratory diseases. Tobacco use and exposure to tobacco smoke are associated with premature death from chronic diseases. Tobacco use is also responsible for economic losses and places a burden on both society and the health care system.

Did you know?




Percent of Nevadans who were current smokers by race/ethnicity*



*Behavioral Risk Factor Surveillance System, 2014 data

What you can do

- Call Nevada Tobacco Quit line at 1-800-QUIT-NOW (1-800-784-8669)
 - Go online to www.nevadatobaccoquitline.com
 - Go online to <http://nevadawellness.org/>
- 

For additional information regarding this infographic please contact the Office of Public Health Informatics and Epidemiology at (775)-684-5911. This publication was supported by the Nevada State Division of Public and Behavioral Health through Grant Number 1U58DP006009-01 from the Centers for Disease Control and Prevention.

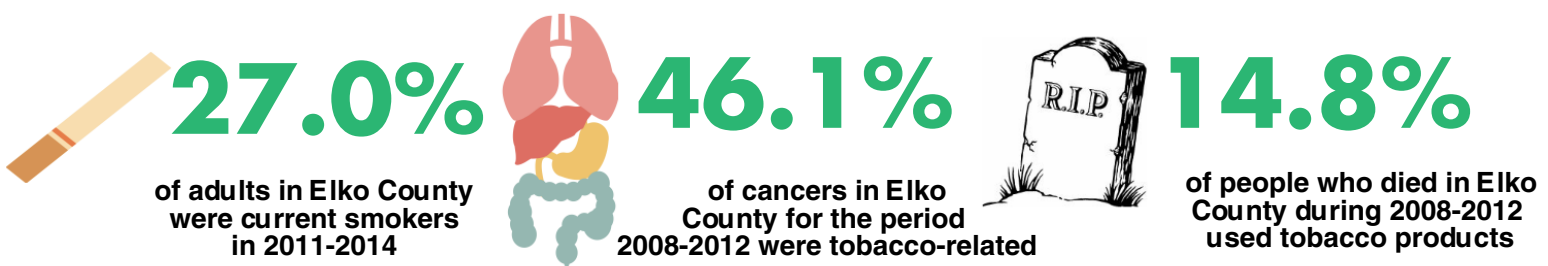


Tobacco Smoking in Elko County, Nevada

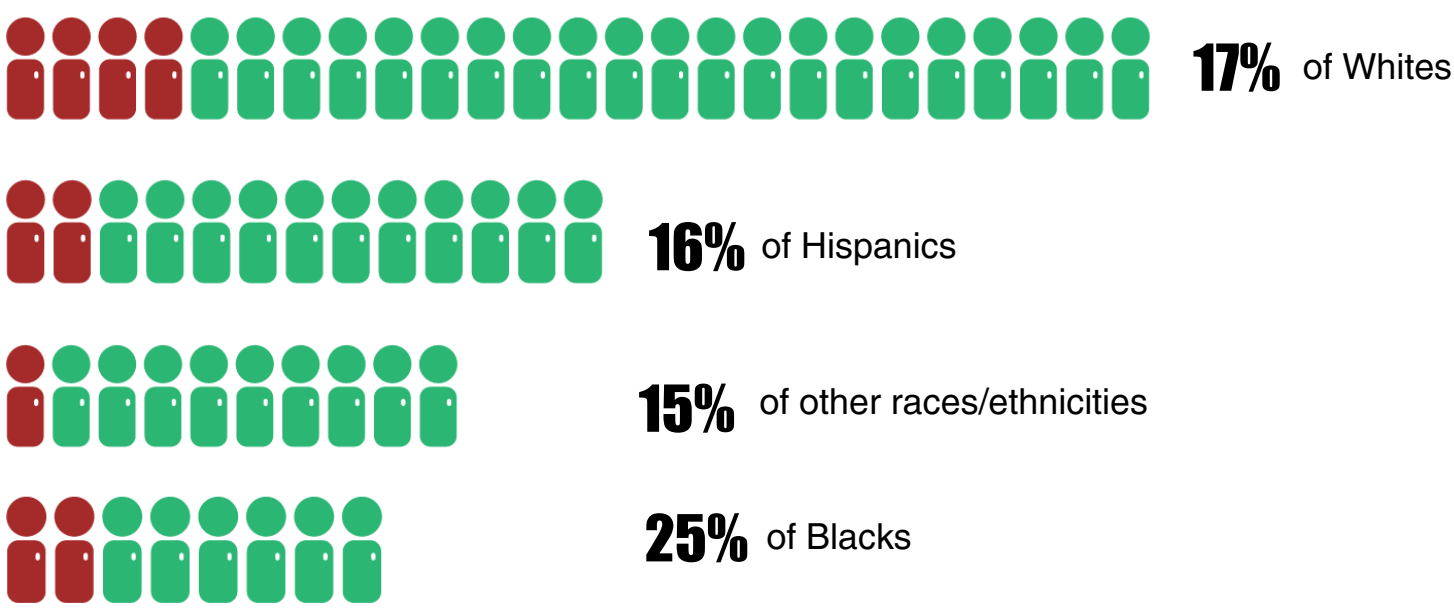


According to the Centers for Disease Control and Prevention, cigarette smoking and exposure to tobacco smoke affects nearly all body organs. Smoking is a major cause of tobacco-related illnesses such as heart disease, some cancers, and respiratory diseases. Tobacco use and exposure to tobacco smoke are associated with premature death from chronic diseases. Tobacco use is also responsible for economic losses and places a burden on both society and the health care system.

Did you know?




Percent of Nevadans who were current smokers by race/ethnicity*



*Behavioral Risk Factor Surveillance System, 2014 data

What you can do

- Call Nevada Tobacco Quit line at 1-800-QUIT-NOW (1-800-784-8669)
 - Go online to www.nevadatobaccoquitline.com
 - Go online to <http://nevadawellness.org/>
- 

For additional information regarding this infographic please contact the Office of Public Health Informatics and Epidemiology at (775)-684-5911. This publication was supported by the Nevada State Division of Public and Behavioral Health through Grant Number 1U58DP006009-01 from the Centers for Disease Control and Prevention.

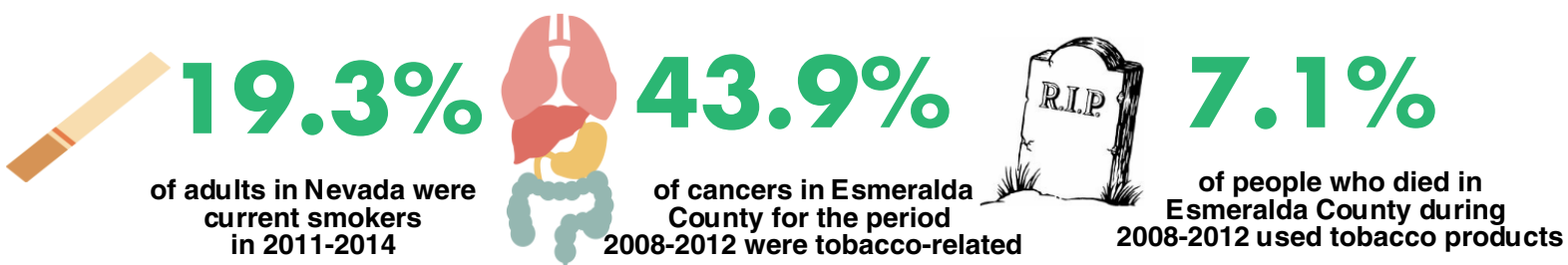


Tobacco Smoking in Esmeralda County, Nevada

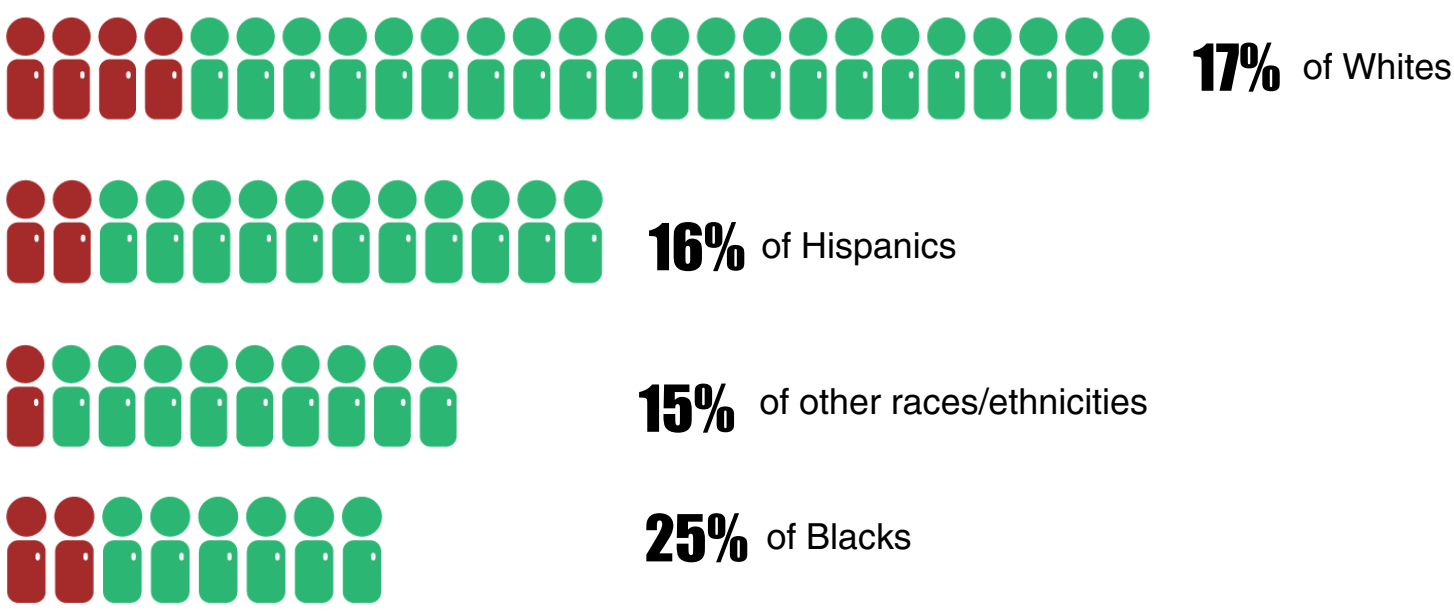


According to the Centers for Disease Control and Prevention, cigarette smoking and exposure to tobacco smoke affects nearly all body organs. Smoking is a major cause of tobacco-related illnesses such as heart disease, some cancers, and respiratory diseases. Tobacco use and exposure to tobacco smoke are associated with premature death from chronic diseases. Tobacco use is also responsible for economic losses and places a burden on both society and the health care system.

Did you know?




Percent of Nevadans who were current smokers by race/ethnicity*



*Behavioral Risk Factor Surveillance System, 2014 data

What you can do

- Call Nevada Tobacco Quit line at 1-800-QUIT-NOW (1-800-784-8669)
 - Go online to www.nevadatobaccoquitline.com
 - Go online to <http://nevadawellness.org/>
- 

For additional information regarding this infographic please contact the Office of Public Health Informatics and Epidemiology at (775)-684-5911. This publication was supported by the Nevada State Division of Public and Behavioral Health through Grant Number 1U58DP006009-01 from the Centers for Disease Control and Prevention.

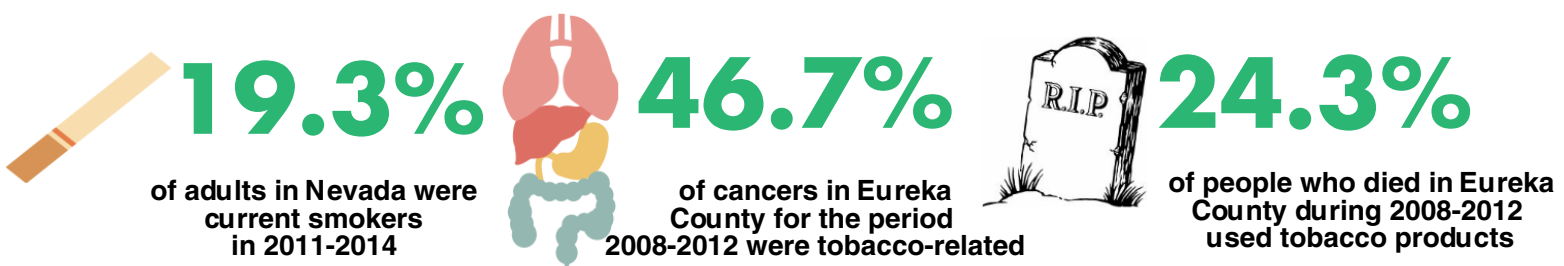


Tobacco Smoking in Eureka County, Nevada

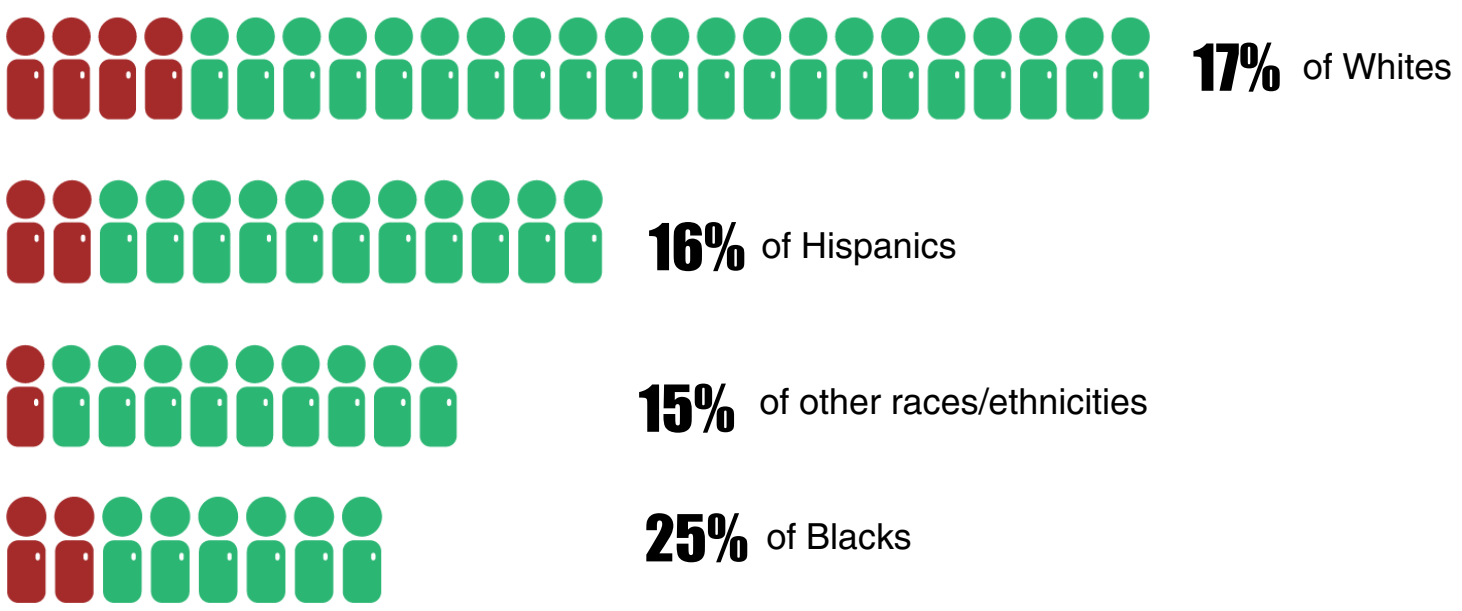


According to the Centers for Disease Control and Prevention, cigarette smoking and exposure to tobacco smoke affects nearly all body organs. Smoking is a major cause of tobacco-related illnesses such as heart disease, some cancers, and respiratory diseases. Tobacco use and exposure to tobacco smoke are associated with premature death from chronic diseases. Tobacco use is also responsible for economic losses and places a burden on both society and the health care system.

Did you know?



Percent of Nevadans who were current smokers by race/ethnicity*



*Behavioral Risk Factor Surveillance System, 2014 data

What you can do

Call Nevada Tobacco Quit line at 1-800-QUIT-NOW (1-800-784-8669)

Go online to www.nevadatobaccoquitline.com



Go online to <http://nevadawellness.org/>

For additional information regarding this infographic please contact the Office of Public Health Informatics and Epidemiology at (775)-684-5911. This publication was supported by the Nevada State Division of Public and Behavioral Health through Grant Number 1U58DP006009-01 from the Centers for Disease Control and Prevention.

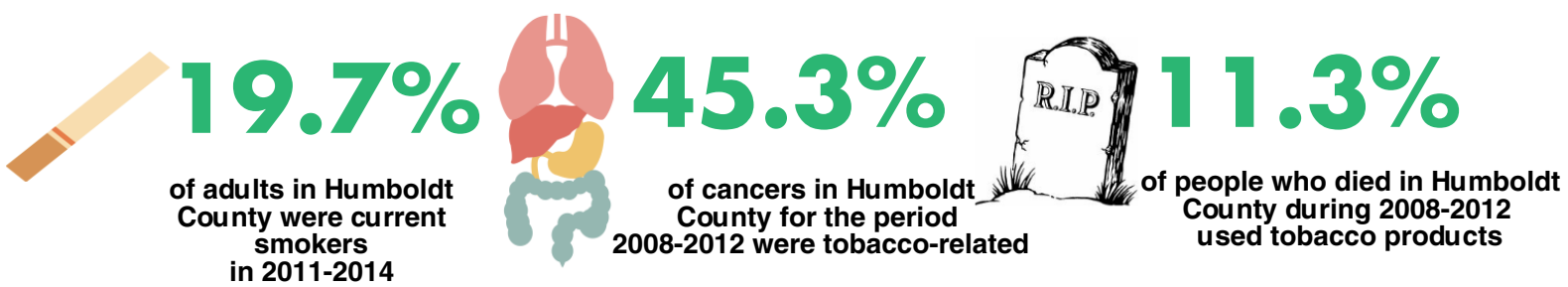


Tobacco Smoking in Humboldt County, Nevada

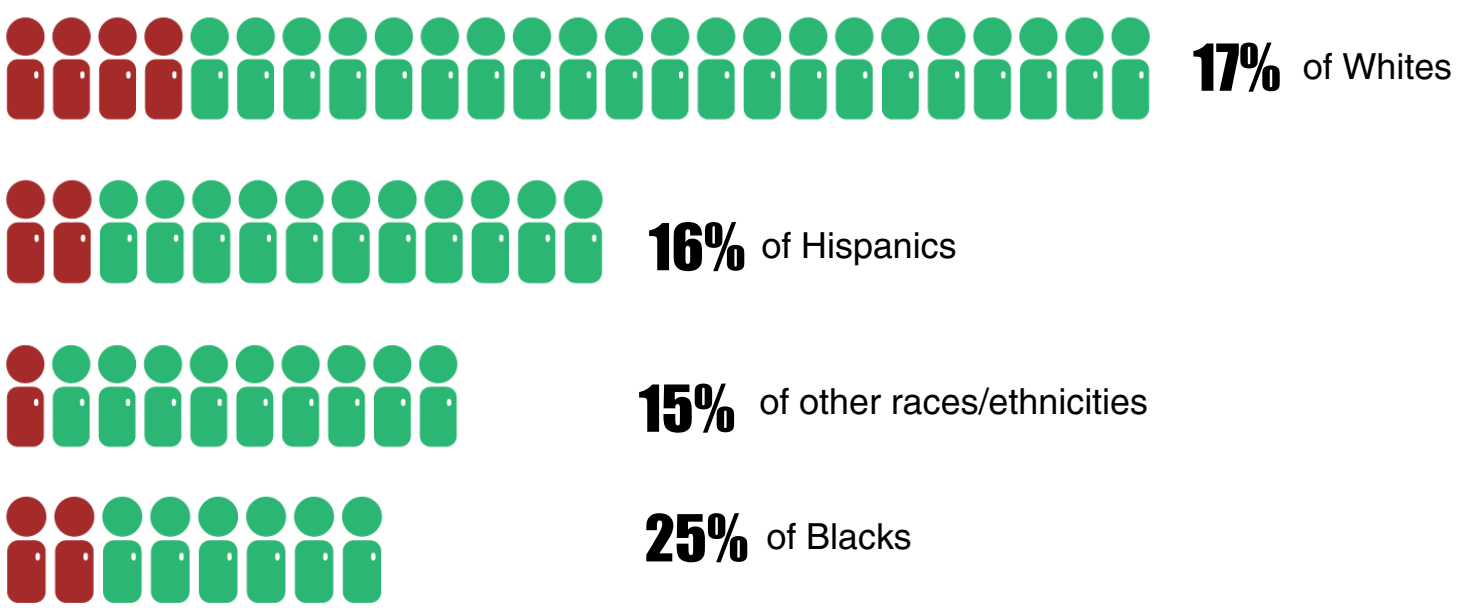


According to the Centers for Disease Control and Prevention, cigarette smoking and exposure to tobacco smoke affects nearly all body organs. Smoking is a major cause of tobacco-related illnesses such as heart disease, some cancers, and respiratory diseases. Tobacco use and exposure to tobacco smoke are associated with premature death from chronic diseases. Tobacco use is also responsible for economic losses and places a burden on both society and the health care system.

Did you know?




Percent of Nevadans who were current smokers by race/ethnicity*



*Behavioral Risk Factor Surveillance System, 2014 data

What you can do

- Call Nevada Tobacco Quit line at 1-800-QUIT-NOW (1-800-784-8669)
 - Go online to www.nevadatobaccoquitline.com
 - Go online to <http://nevadawellness.org/>
- 

For additional information regarding this infographic please contact the Office of Public Health Informatics and Epidemiology at (775)-684-5911. This publication was supported by the Nevada State Division of Public and Behavioral Health through Grant Number 1U58DP006009-01 from the Centers for Disease Control and Prevention.

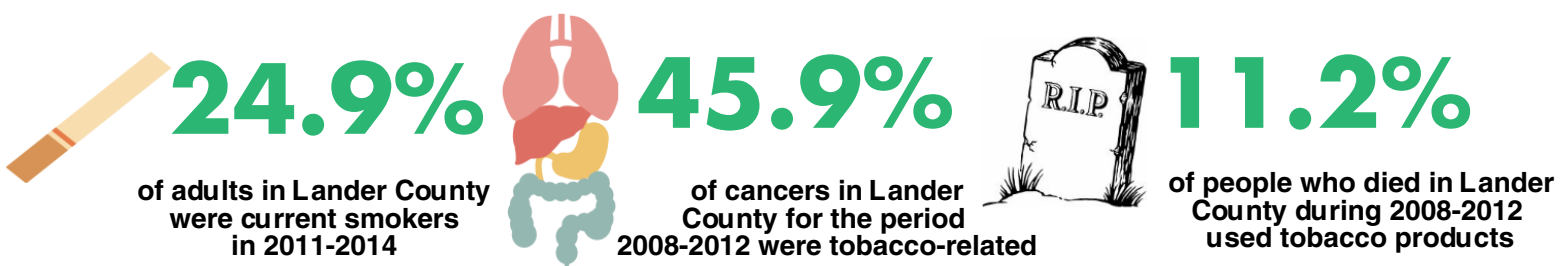


Tobacco Smoking in Lander County, Nevada

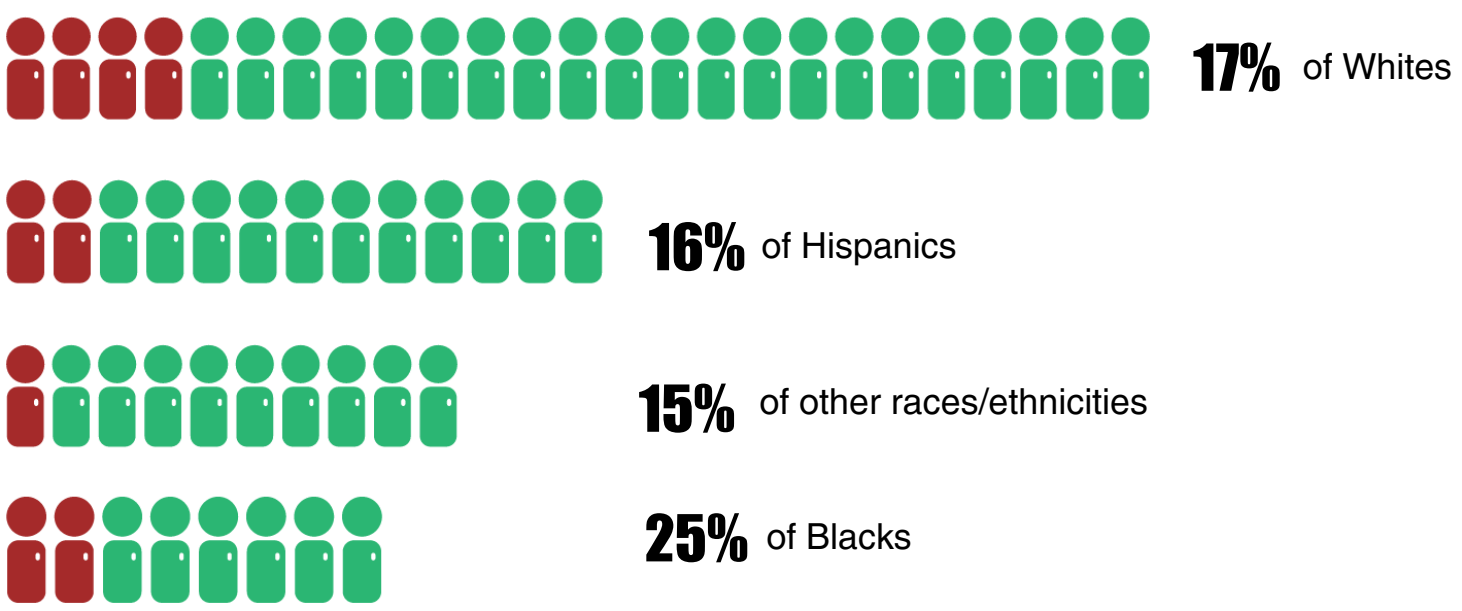


According to the Centers for Disease Control and Prevention, cigarette smoking and exposure to tobacco smoke affects nearly all body organs. Smoking is a major cause of tobacco-related illnesses such as heart disease, some cancers, and respiratory diseases. Tobacco use and exposure to tobacco smoke are associated with premature death from chronic diseases. Tobacco use is also responsible for economic losses and places a burden on both society and the health care system.

Did you know?




Percent of Nevadans who were current smokers by race/ethnicity*



*Behavioral Risk Factor Surveillance System, 2014 data

What you can do

- Call Nevada Tobacco Quit line at 1-800-QUIT-NOW (1-800-784-8669)
 - Go online to www.nevadatobaccoquitline.com
 - Go online to <http://nevadawellness.org/>
- 

For additional information regarding this infographic please contact the Office of Public Health Informatics and Epidemiology at (775)-684-5911. This publication was supported by the Nevada State Division of Public and Behavioral Health through Grant Number 1U58DP006009-01 from the Centers for Disease Control and Prevention.

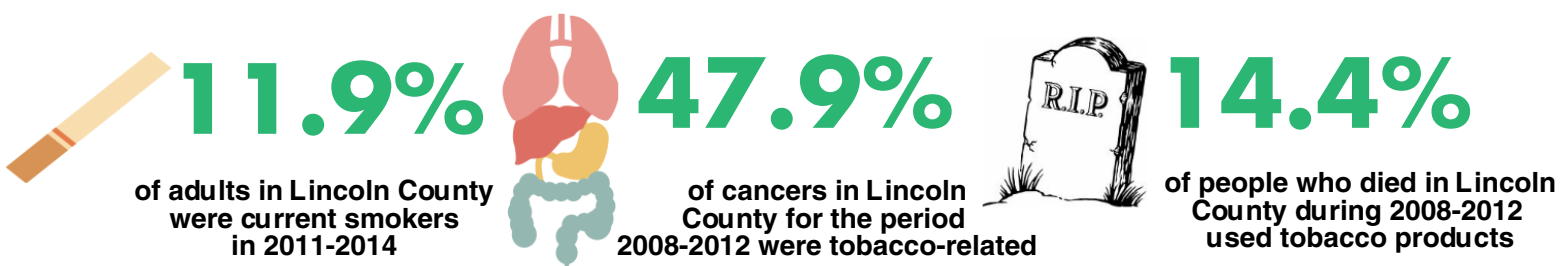


Tobacco Smoking in Lincoln County, Nevada

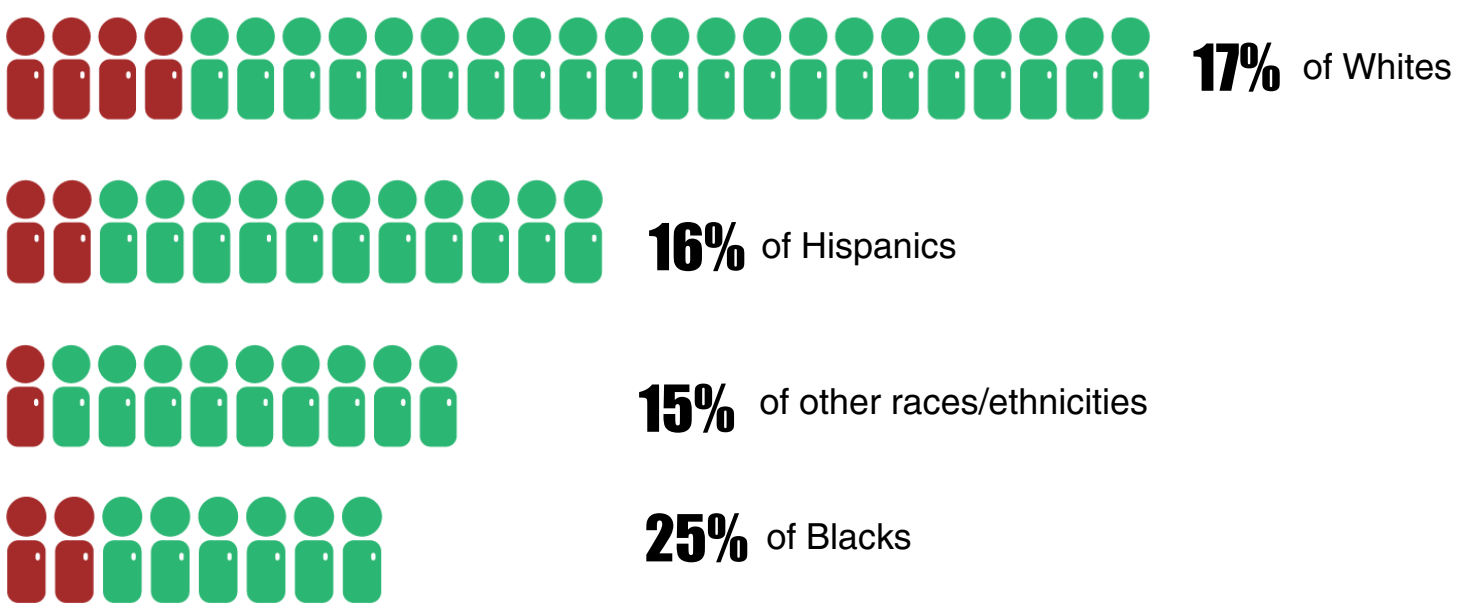


According to the Centers for Disease Control and Prevention, cigarette smoking and exposure to tobacco smoke affects nearly all body organs. Smoking is a major cause of tobacco-related illnesses such as heart disease, some cancers, and respiratory diseases. Tobacco use and exposure to tobacco smoke are associated with premature death from chronic diseases. Tobacco use is also responsible for economic losses and places a burden on both society and the health care system.

Did you know?



Percent of Nevadans who were current smokers by race/ethnicity*



*Behavioral Risk Factor Surveillance System, 2014 data

What you can do

Call Nevada Tobacco Quit line at 1-800-QUIT-NOW (1-800-784-8669)

Go online to www.nevadatobaccoquitline.com



Go online to <http://nevadawellness.org/>

For additional information regarding this infographic please contact the Office of Public Health Informatics and Epidemiology at (775)-684-5911. This publication was supported by the Nevada State Division of Public and Behavioral Health through Grant Number 1U58DP006009-01 from the Centers for Disease Control and Prevention.

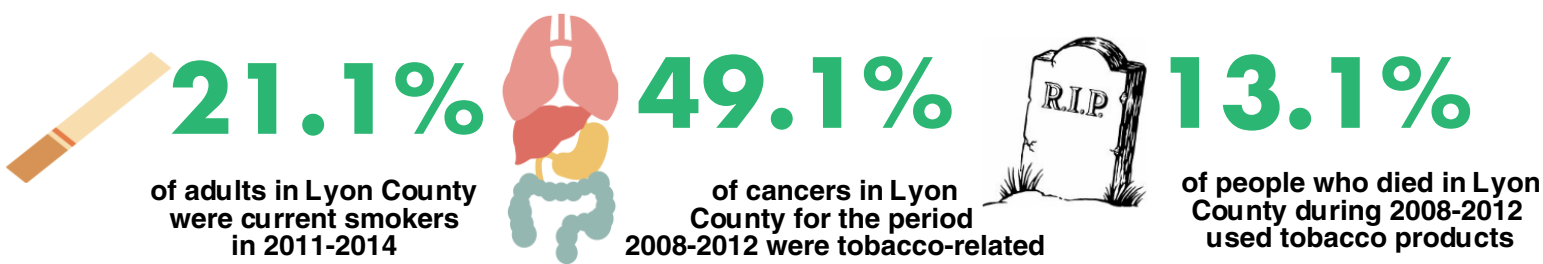


Tobacco Smoking in Lyon County, Nevada



According to the Centers for Disease Control and Prevention, cigarette smoking and exposure to tobacco smoke affects nearly all body organs. Smoking is a major cause of tobacco-related illnesses such as heart disease, some cancers, and respiratory diseases. Tobacco use and exposure to tobacco smoke are associated with premature death from chronic diseases. Tobacco use is also responsible for economic losses and places a burden on both society and the health care system.

Did you know?



Percent of Nevadans who were current smokers by race/ethnicity*



*Behavioral Risk Factor Surveillance System, 2014 data

What you can do

Call Nevada Tobacco Quit line at 1-800-QUIT-NOW (1-800-784-8669)

Go online to www.nevadatobaccoquitline.com

Go online to <http://nevadawellness.org/>



For additional information regarding this infographic please contact the Office of Public Health Informatics and Epidemiology at (775)-684-5911. This publication was supported by the Nevada State Division of Public and Behavioral Health through Grant Number 1U58DP006009-01 from the Centers for Disease Control and Prevention.

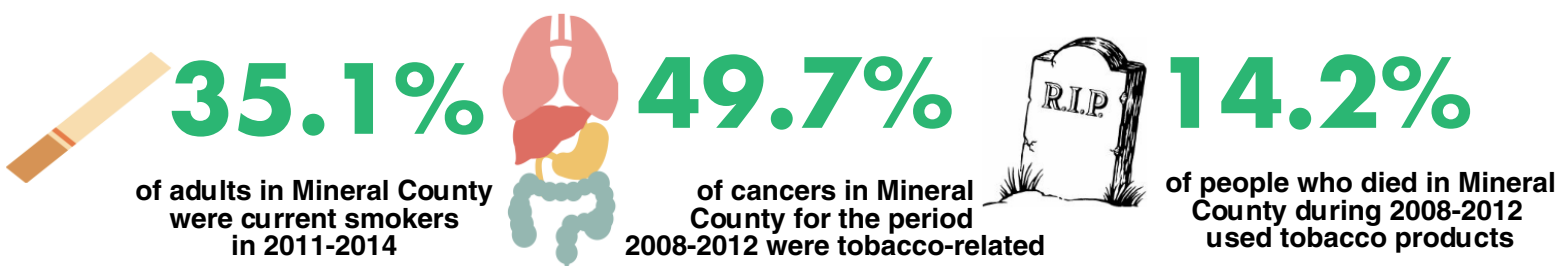


Tobacco Smoking in Mineral County, Nevada

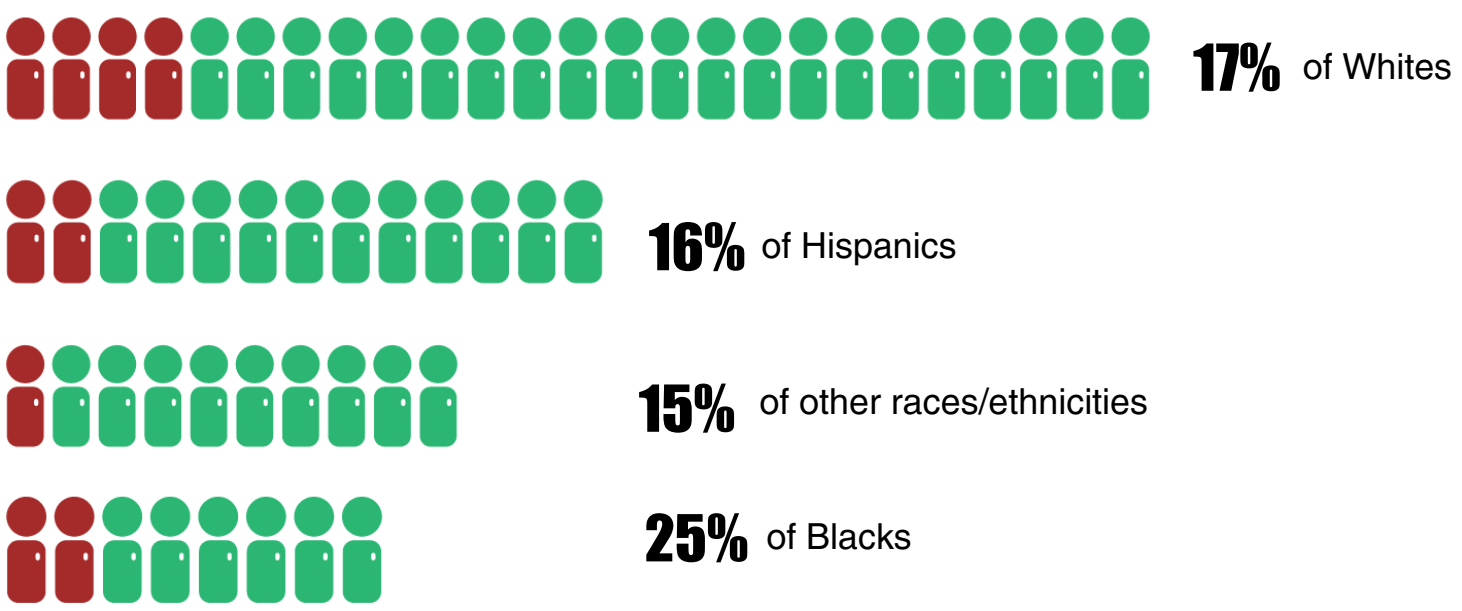


According to the Centers for Disease Control and Prevention, cigarette smoking and exposure to tobacco smoke affects nearly all body organs. Smoking is a major cause of tobacco-related illnesses such as heart disease, some cancers, and respiratory diseases. Tobacco use and exposure to tobacco smoke are associated with premature death from chronic diseases. Tobacco use is also responsible for economic losses and places a burden on both society and the health care system.

Did you know?




Percent of Nevadans who were current smokers by race/ethnicity*



*Behavioral Risk Factor Surveillance System, 2014 data

What you can do

- Call Nevada Tobacco Quit line at 1-800-QUIT-NOW (1-800-784-8669)
 - Go online to www.nevadatobaccoquitline.com
 - Go online to <http://nevadawellness.org/>
- 

For additional information regarding this infographic please contact the Office of Public Health Informatics and Epidemiology at (775)-684-5911. This publication was supported by the Nevada State Division of Public and Behavioral Health through Grant Number 1U58DP006009-01 from the Centers for Disease Control and Prevention.

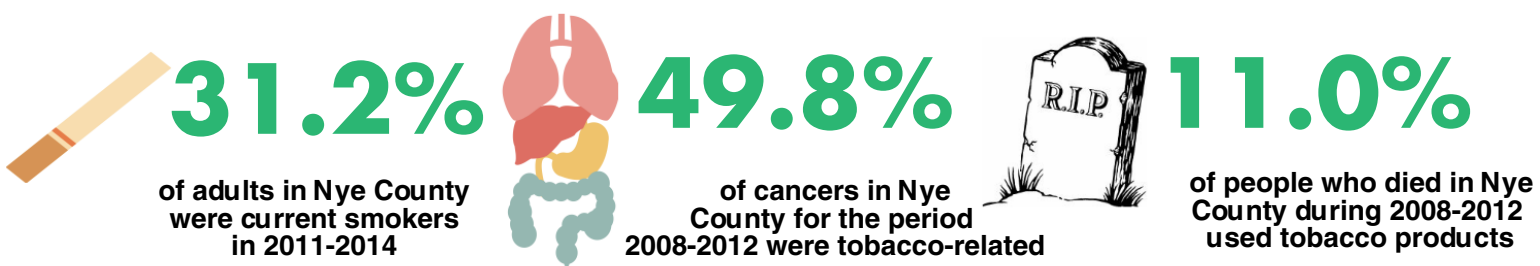


Tobacco Smoking in Nye County, Nevada

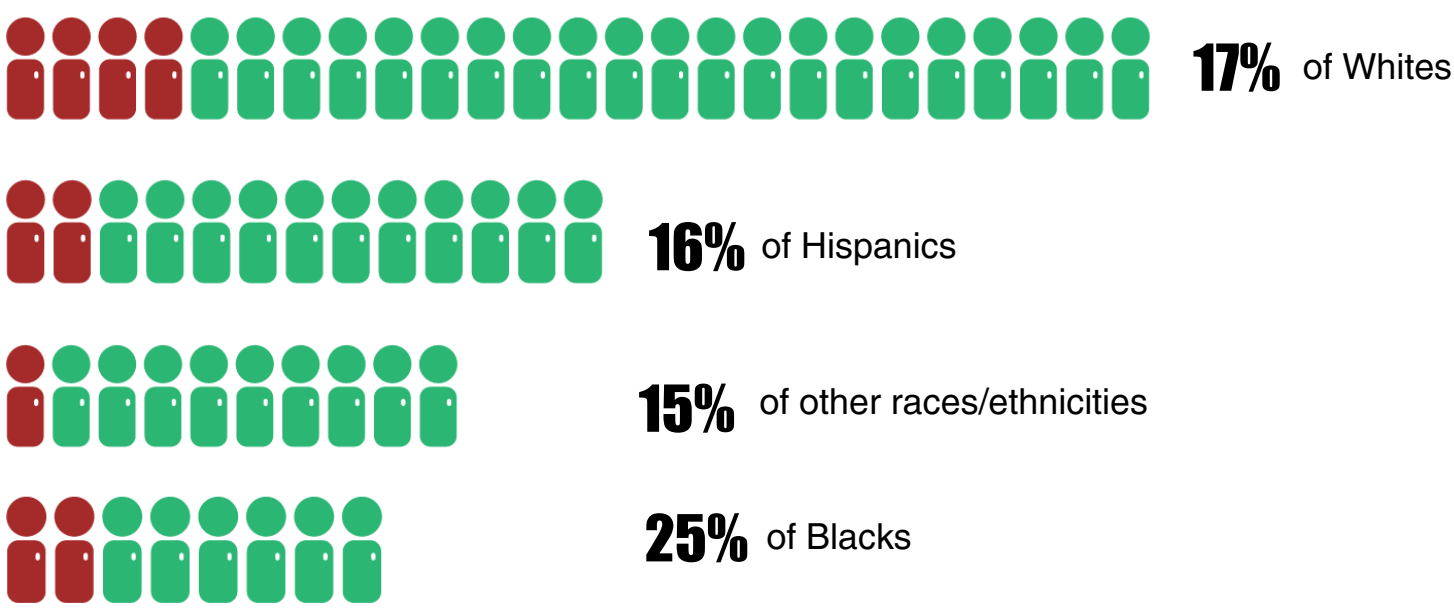


According to the Centers for Disease Control and Prevention, cigarette smoking and exposure to tobacco smoke affects nearly all body organs. Smoking is a major cause of tobacco-related illnesses such as heart disease, some cancers, and respiratory diseases. Tobacco use and exposure to tobacco smoke are associated with premature death from chronic diseases. Tobacco use is also responsible for economic losses and places a burden on both society and the health care system.

Did you know?




Percent of Nevadans who were current smokers by race/ethnicity*



*Behavioral Risk Factor Surveillance System, 2014 data

What you can do

- Call Nevada Tobacco Quit line at 1-800-QUIT-NOW (1-800-784-8669)
 - Go online to www.nevadatobaccoquitline.com
 - Go online to <http://nevadawellness.org/>
- 

For additional information regarding this infographic please contact the Office of Public Health Informatics and Epidemiology at (775)-684-5911. This publication was supported by the Nevada State Division of Public and Behavioral Health through Grant Number 1U58DP006009-01 from the Centers for Disease Control and Prevention.

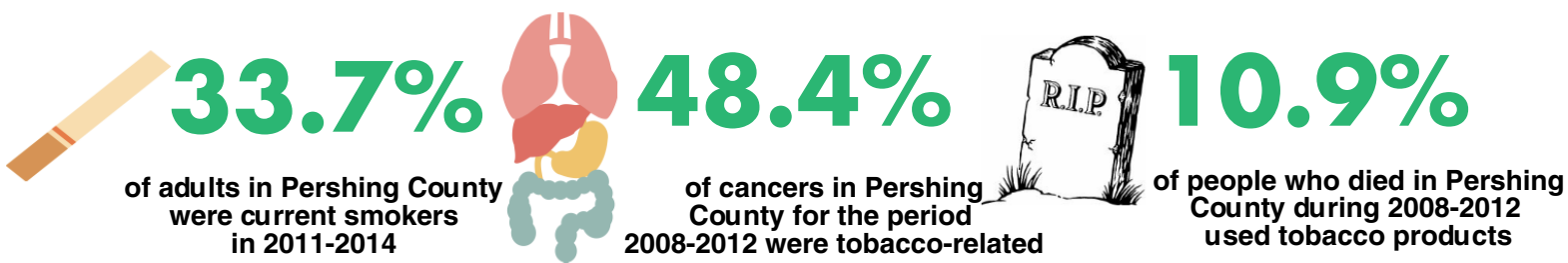


Tobacco Smoking in Pershing County, Nevada

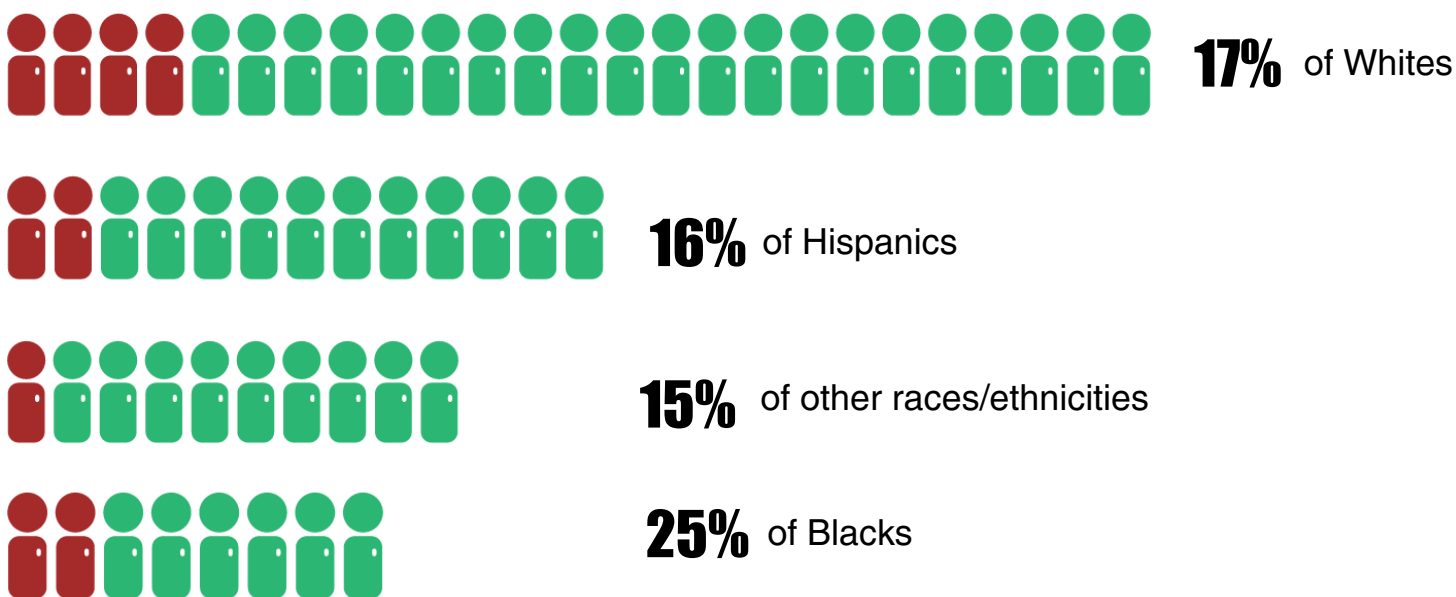


According to the Centers for Disease Control and Prevention, cigarette smoking and exposure to tobacco smoke affects nearly all body organs. Smoking is a major cause of tobacco-related illnesses such as heart disease, some cancers, and respiratory diseases. Tobacco use and exposure to tobacco smoke are associated with premature death from chronic diseases. Tobacco use is also responsible for economic losses and places a burden on both society and the health care system.

Did you know?



Percent of Nevadans who were current smokers by race/ethnicity*



*Behavioral Risk Factor Surveillance System, 2014 data

What you can do

Call Nevada Tobacco Quit line at 1-800-QUIT-NOW (1-800-784-8669)

Go online to www.nevadatobaccoquitline.com



Go online to <http://nevadawellness.org/>

For additional information regarding this infographic please contact the Office of Public Health Informatics and Epidemiology at (775)-684-5911. This publication was supported by the Nevada State Division of Public and Behavioral Health through Grant Number 1U58DP006009-01 from the Centers for Disease Control and Prevention.

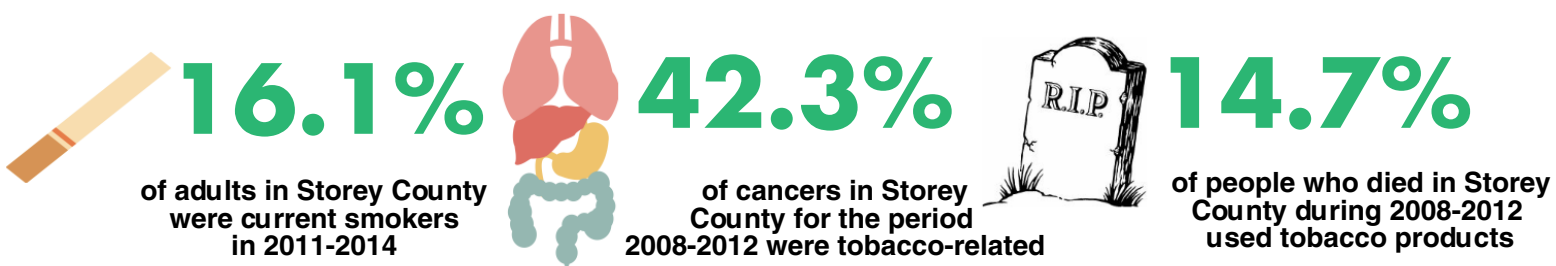


Tobacco Smoking in Storey County, Nevada

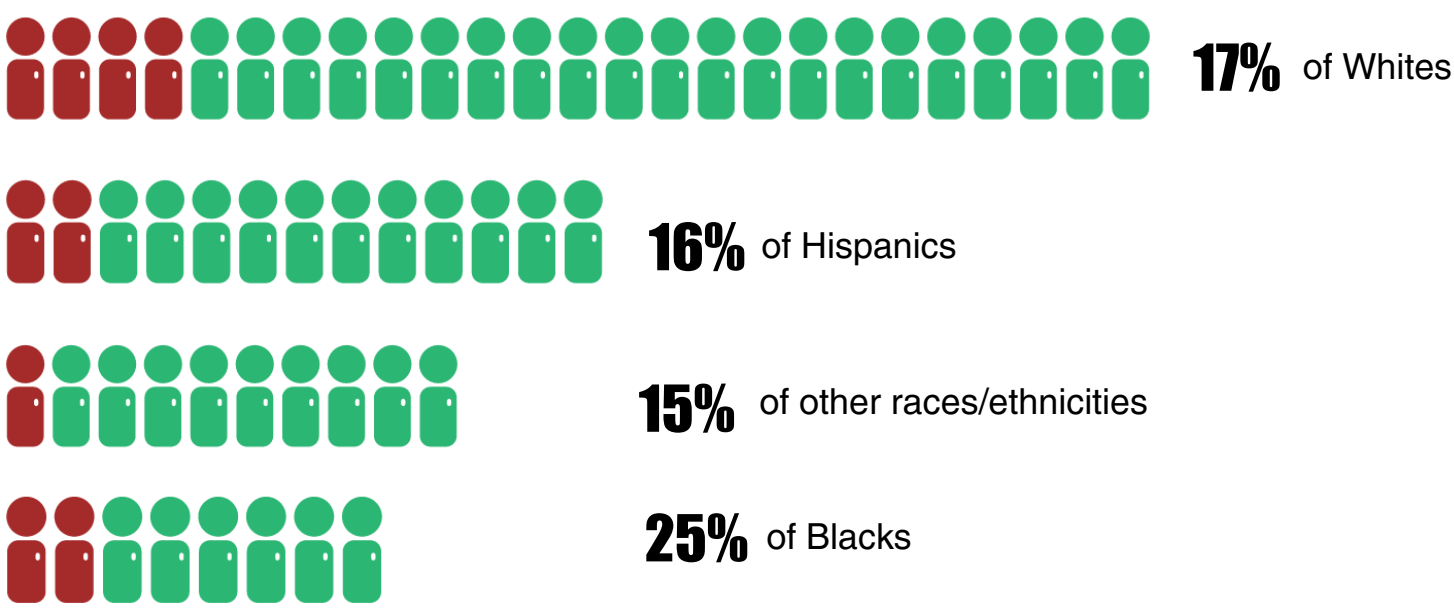


According to the Centers for Disease Control and Prevention, cigarette smoking and exposure to tobacco smoke affects nearly all body organs. Smoking is a major cause of tobacco-related illnesses such as heart disease, some cancers, and respiratory diseases. Tobacco use and exposure to tobacco smoke are associated with premature death from chronic diseases. Tobacco use is also responsible for economic losses and places a burden on both society and the health care system.

Did you know?




Percent of Nevadans who were current smokers by race/ethnicity*



*Behavioral Risk Factor Surveillance System, 2014 data

What you can do

- Call Nevada Tobacco Quit line at 1-800-QUIT-NOW (1-800-784-8669)
 - Go online to www.nevadatobaccoquitline.com
 - Go online to <http://nevadawellness.org/>
- 

For additional information regarding this infographic please contact the Office of Public Health Informatics and Epidemiology at (775)-684-5911. This publication was supported by the Nevada State Division of Public and Behavioral Health through Grant Number 1U58DP006009-01 from the Centers for Disease Control and Prevention.

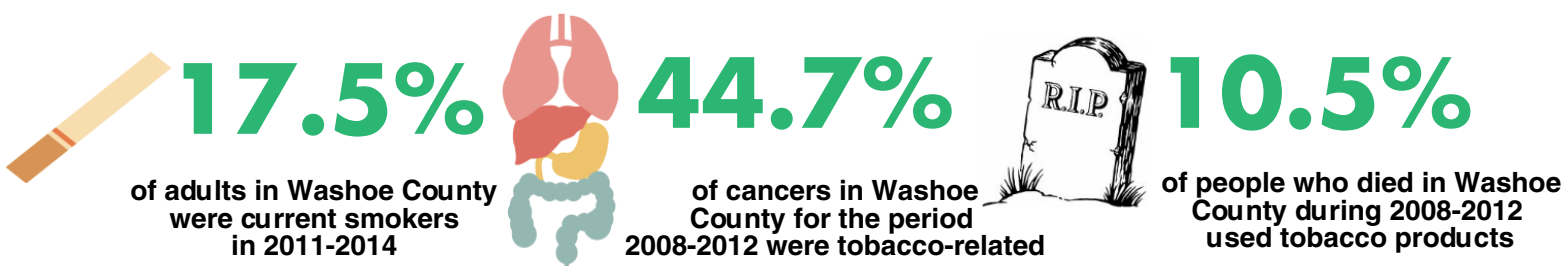


Tobacco Smoking in Washoe County, Nevada

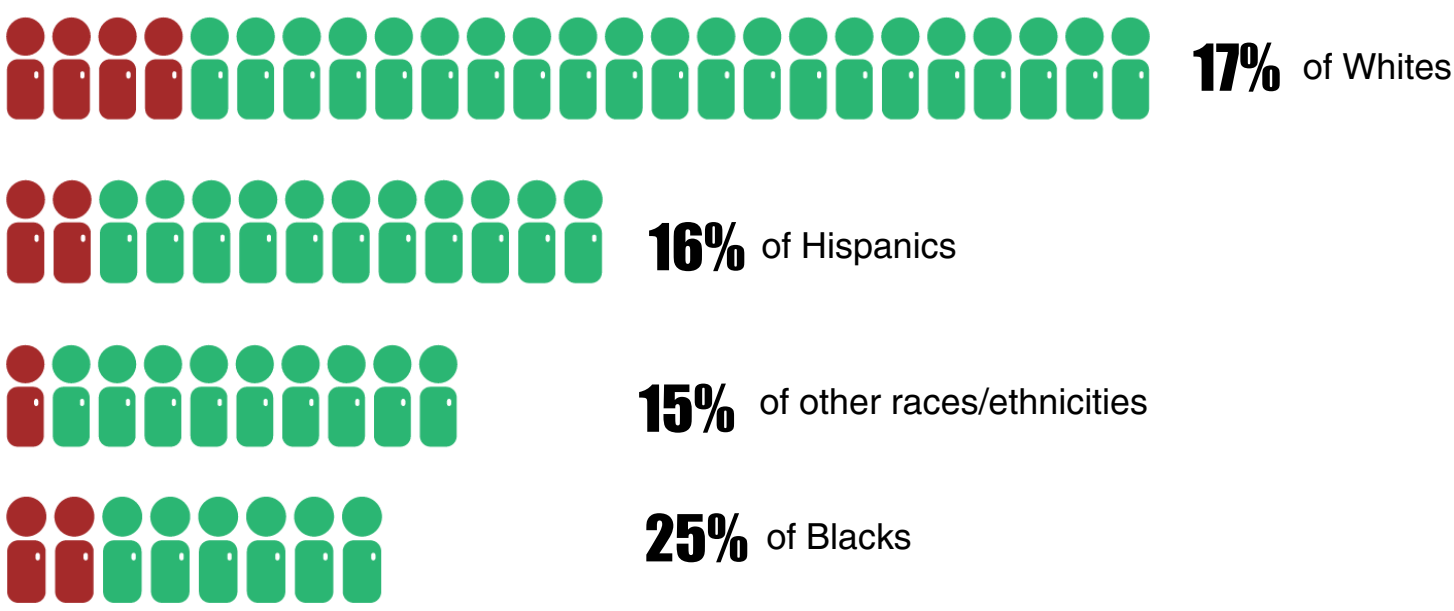


According to the Centers for Disease Control and Prevention, cigarette smoking and exposure to tobacco smoke affects nearly all body organs. Smoking is a major cause of tobacco-related illnesses such as heart disease, some cancers, and respiratory diseases. Tobacco use and exposure to tobacco smoke are associated with premature death from chronic diseases. Tobacco use is also responsible for economic losses and places a burden on both society and the health care system.

Did you know?




Percent of Nevadans who were current smokers by race/ethnicity*



*Behavioral Risk Factor Surveillance System, 2014 data

What you can do

- Call Nevada Tobacco Quit line at 1-800-QUIT-NOW (1-800-784-8669)
 - Go online to www.nevadatobaccoquitline.com
 - Go online to <http://nevadawellness.org/>
- 

For additional information regarding this infographic please contact the Office of Public Health Informatics and Epidemiology at (775)-684-5911. This publication was supported by the Nevada State Division of Public and Behavioral Health through Grant Number 1U58DP006009-01 from the Centers for Disease Control and Prevention.

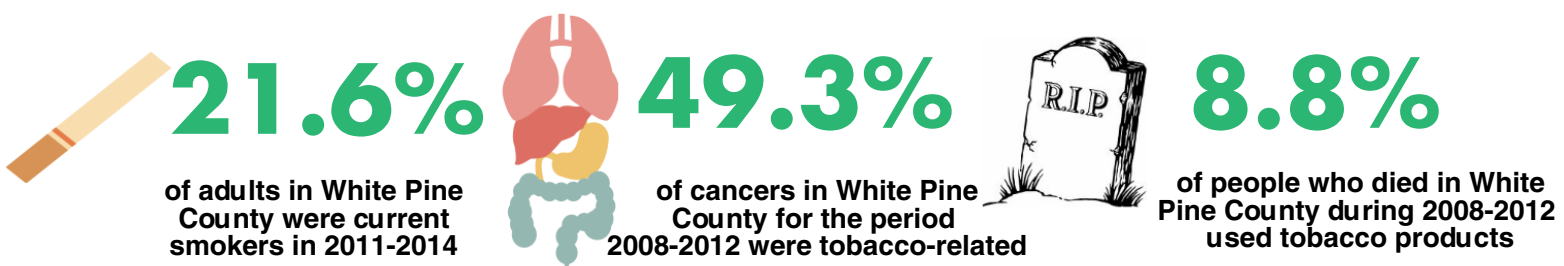


Tobacco Smoking in White Pine County, Nevada

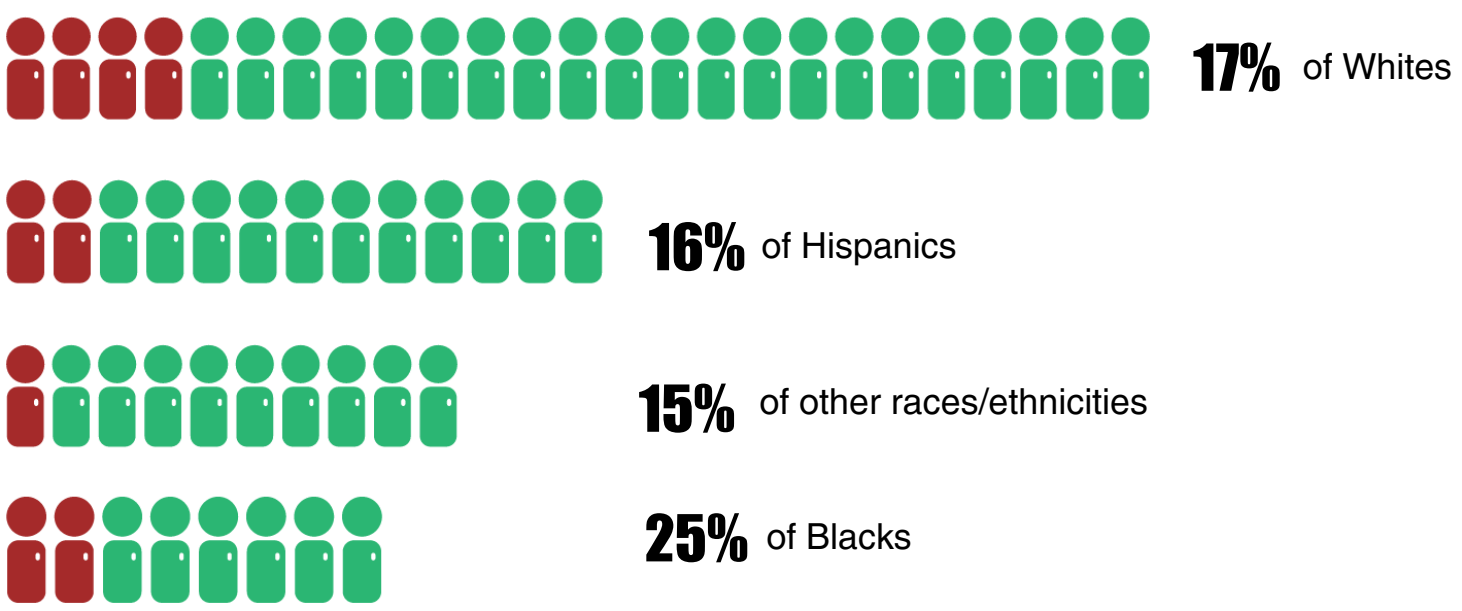


According to the Centers for Disease Control and Prevention, cigarette smoking and exposure to tobacco smoke affects nearly all body organs. Smoking is a major cause of tobacco-related illnesses such as heart disease, some cancers, and respiratory diseases. Tobacco use and exposure to tobacco smoke are associated with premature death from chronic diseases. Tobacco use is also responsible for economic losses and places a burden on both society and the health care system.

Did you know?



Percent of Nevadans who were current smokers by race/ethnicity*



*Behavioral Risk Factor Surveillance System, 2014 data

What you can do

Call Nevada Tobacco Quit line at 1-800-QUIT-NOW (1-800-784-8669)

Go online to www.nevadatobaccoquitline.com

Go online to <http://nevadawellness.org/>



For additional information regarding this infographic please contact the Office of Public Health Informatics and Epidemiology at (775)-684-5911. This publication was supported by the Nevada State Division of Public and Behavioral Health through Grant Number 1U58DP006009-01 from the Centers for Disease Control and Prevention.



Tobacco Smoking in Nevada



Technical Notes

Behavioral Risk Factor Surveillance System (BRFSS)

Prevalence data for current smokers are from Behavioral Risk Factor Surveillance System (BRFSS). BRFSS data for 2011 through 2014 were pooled (combined) in order to get reliable estimates for most counties. BRFSS methodology changed in 2011, therefore, it may be misleading to compare statistics before and after the methodology change. Current smokers were defined as persons who reported smoking at least 100 cigarettes during their lifetime and who, at the time of survey, reported smoking every day or some days.

Nevada Central Cancer Registry

Cancer data are from Nevada Central Cancer Registry for the period 2008-2012. The following cancers listed by the American Cancer Society (ACS) as tobacco-related were used:

- Lung cancer
- Lip, Oral Cavity, and Pharynx
- Larynx
- Esophagus
- Stomach
- Pancreas
- Kidney and Renal Pelvis
- Urinary bladder
- Cervix (Cervix uteri)
- Colorectal
- Ovary
- Leukemia (ACS lists acute myeloid leukemia, however, all Leukemia cases were used)

Mortality

Mortality data are from Nevada Electronic Death Registry System. Data for 2008-2012 were used to identify records that indicated use of tobacco products. Axis codes F17 (Mental and Behavioral Disorders Due to Use of Tobacco) and T65.2 (Toxic Effect of Tobacco and Nicotine) listed in any of the 20 axes were used to calculate percent of individuals who had died and use of tobacco products was indicated on their death certificate. Axis codes are a medical classification list created by the World Health Organization to list cause of death and causes due to or as a consequence of.

Suggested Citation:

Office of Public Health Informatics and Epidemiology. Nevada Division of Public and Behavioral Health. Nevada Tobacco Infographic. Carson City, Nevada. May 2016.